

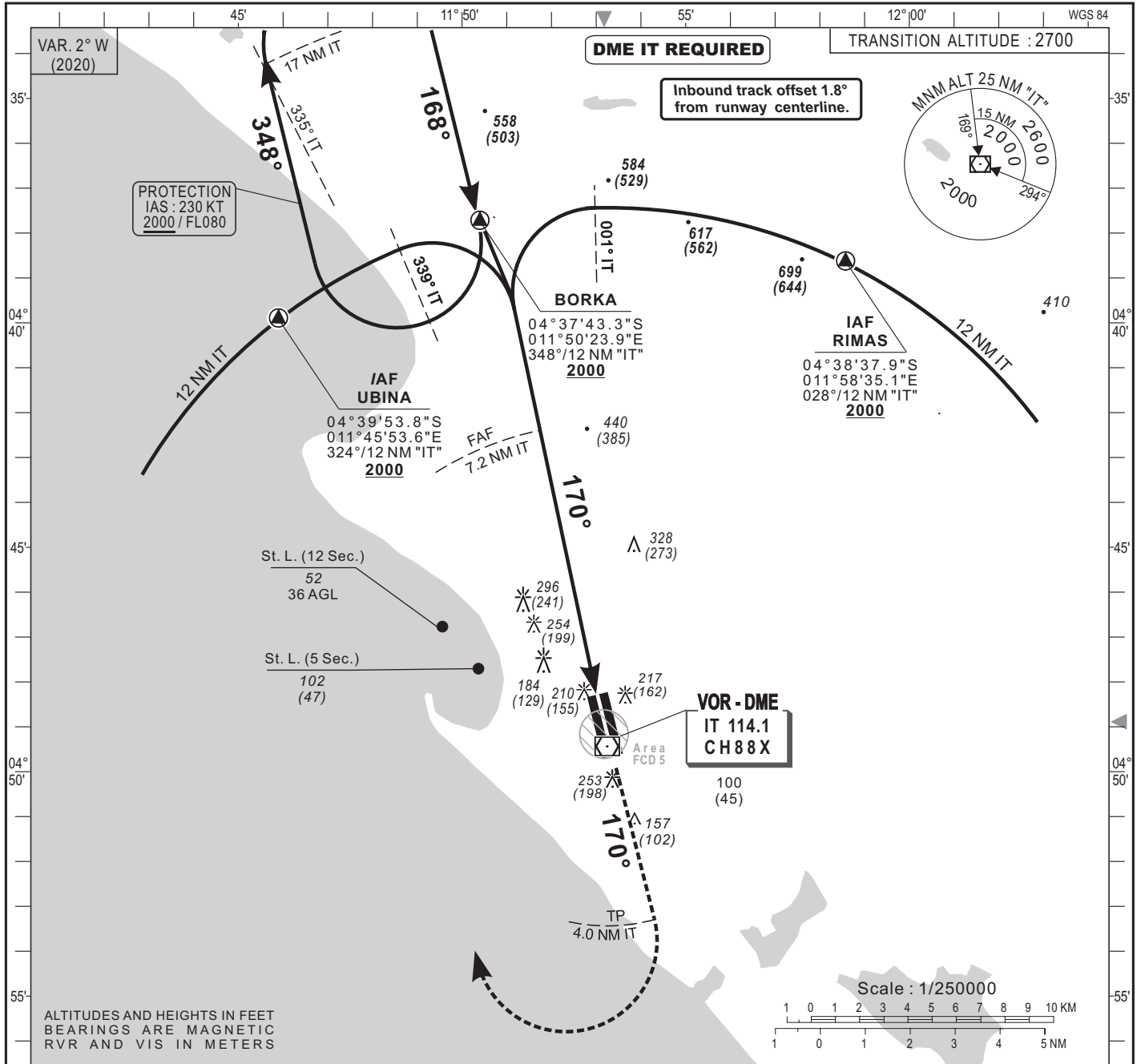
INSTRUMENT APPROACH CHART
Categories A-B-C-D

ELEV. : 55
THR : 55

APP : POINTE NOIRE Tower 124.3
TWR : POINTE NOIRE Tower 124.3

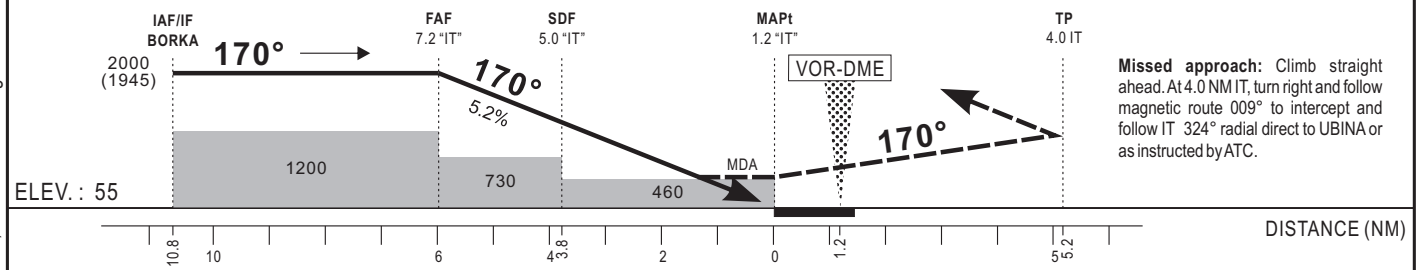
POINTE NOIRE (FCPP)
VOR Z - RWY 17
IDENT VOR "IT" FREQ 114.1

HEIGHTS RELATED TO AERODROME ELEVATION



Distance to IT (NM)	FAF	8	7	6	5	4	3
Altitude (ft)	2000		1950	1640	1320	1000	680

Notes : Inbound track offset 1.8° from runway centerline.



Missed approach: Climb straight ahead. At 4.0 NM IT, turn right and follow magnetic route 009° to intercept and follow IT 324° radial direct to UBINA or as instructed by ATC.

CAT	VOR-DME					CIRCLING (*)				RVR for take-off: CAT A - B-C : 400 Cat D : 400
	OCA (OCH)	MDA	MDH	RVR(1)	RVR(2)	OCA (OCH)	MDA	MDH	VIS	
A	456 (401)	460 (410)		900	1500	528 (473)	530 (480)		1500	Timing FAF-MAPt 6.0 NM KT MIN SEC KT MIN SEC 90 4 Min 00 140 2 Min 34 100 3 Min 36 150 2 Min 24 110 3 Min 16 160 2 Min 15 120 3 Min 00 170 2 Min 07 130 2 Min 46 180 2 Min 00
B	456 (401)	460 (410)		1000	1500	590 (535)	590 (540)		1600	
C	456 (401)	460 (410)		1000	1800	820 (765)	820 (770)		2400	
D	456 (401)	460 (410)		1400	2000	820 (765)	820 (770)		3600	

Notes : (1) With approach lights - (2) Without approach lights
- (*) OCH and MDH AAL - Daytime only
- Climbing sector after take-off from RWY17: Between radials 027° "IT" and 297° "IT".

CORRECTIONS: Magnetic variation, VOR altitude/height.